



OAKMEAD AVENUE

SEMI-DETACHED COMPLETE HOUSE REFURBISHMENT IN BROMLEY

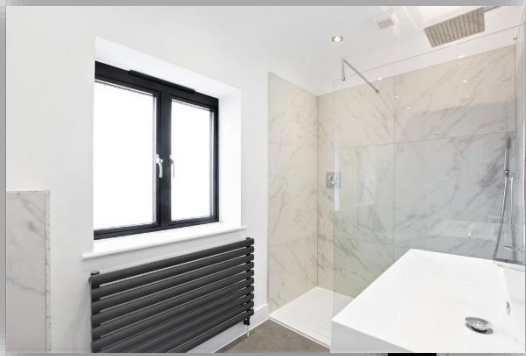
Before development, Oakmead Avenue comprised of a small two-bedroom, 1 bathroom house. Planning permission was gained to build a two-story side and back extension, with a new front porch and garden office, doubling its size. As subcontractors for Clapham Developments, Excellence Plumbing and Gas provided all plumbing, heating, and gas requirements. This is a prime example of a whole house modern renovation, with all mechanical works required for the project meticulously planned and designed, then successfully accomplished to the highest standard, on time and budget.

### PROJECT DELIVERY

Excellence Plumbing and Gas installed:

- A full heating system including new Worcester combination boiler, radiators, downstairs underfloor heating, and all associated pipework.
- All kitchen and utility plumbing and Bosch appliances comprising of sinks, new hob, cooker, dishwasher, washing machine, tumble dryer and water heater.
- 2 full bathrooms, 2 cloakrooms and kitchenette, with all sanitaryware and fittings agreed and ordered in advance to prevent any delay in installing.
- Domestic hot and cold-water services, and water waste drainage.
- In between our works, every area was left clean and tidy for other tradesmen to continue safely on site.





- Our engineer tracking system enabled time on site to be precisely logged, to invoice accurately.
- We carried out all work adhering to rigorous health and safety procedures including Covid 19 regulation. All systems complied with Gas Safe Regulations, Building Regulations, and our in-house quality management standards.
- This is one illustration of an increasing portfolio of domestic projects we have collaborated on. We are proud to share the fantastic outcome resulting in a luxury, immaculate residential property.

